

ALEXANDER SOUTH

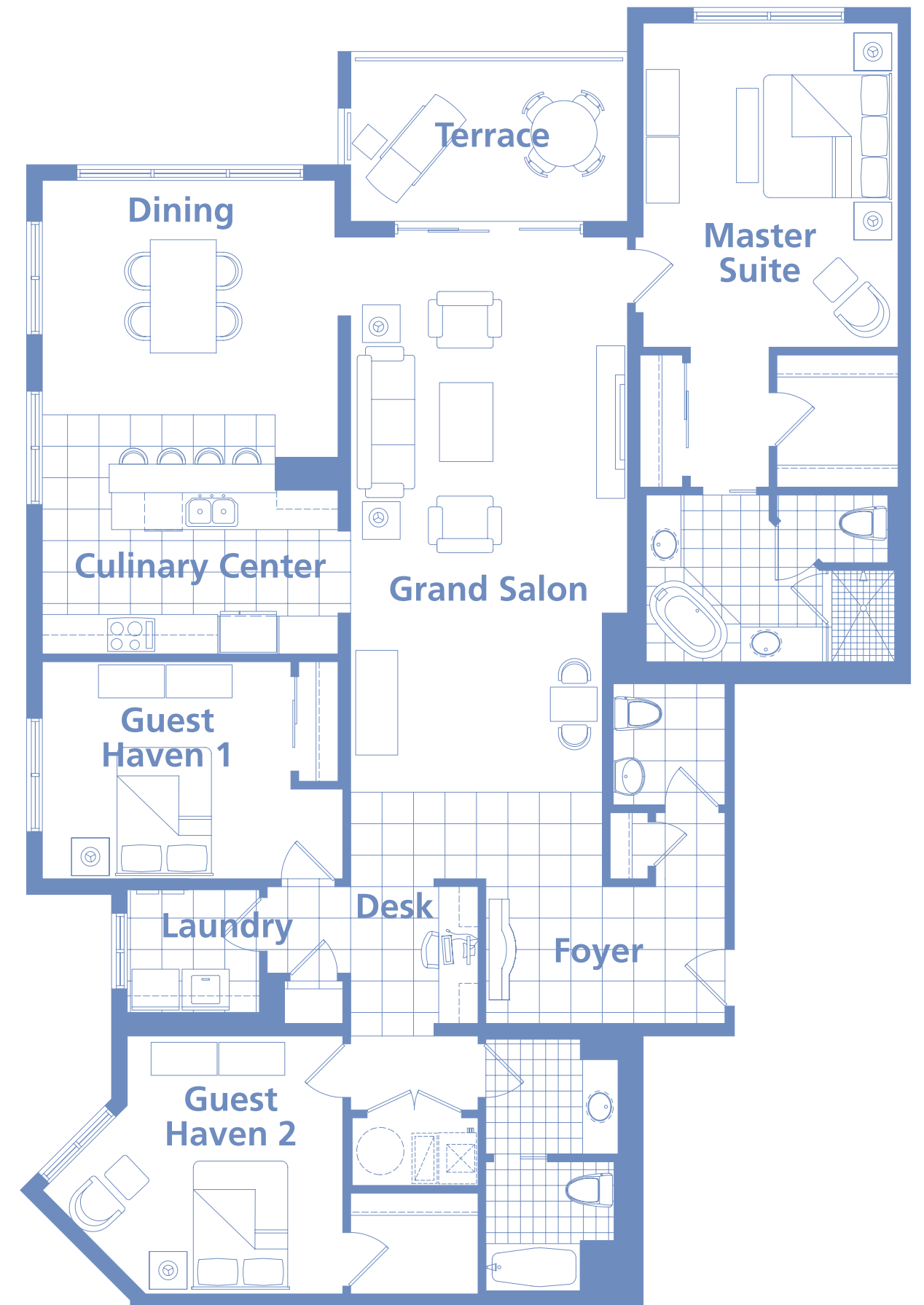
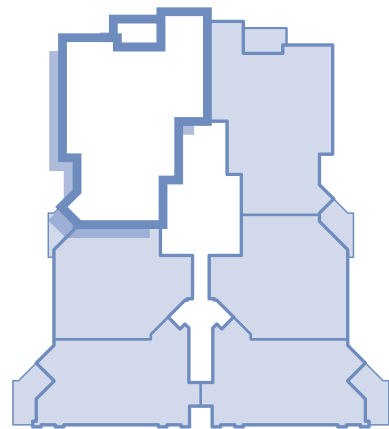
3 Bedroom / 2 1/2 Bath

Interior 2,422 Sq. Ft.

Terrace 136 Sq. Ft.

Total 2,556 Sq. Ft.

Tower Key Plan



There are various methods for calculating the total square footage of a condominium unit, and depending on the method of calculation, the quoted square footage of a condominium unit may vary by more than a nominal amount. The total condominium unit square footages as shown in this brochure are based on the "Architectural Method" of measurement and the exterior perimeter measurements of the condominium unit, which include exterior walls, interior columns, fifty percent of demising walls. These square footage calculations are higher than the interior area space calculations for the condominium units. Please see the Declaration of Condominium for more information.

ALEXANDER NORTH

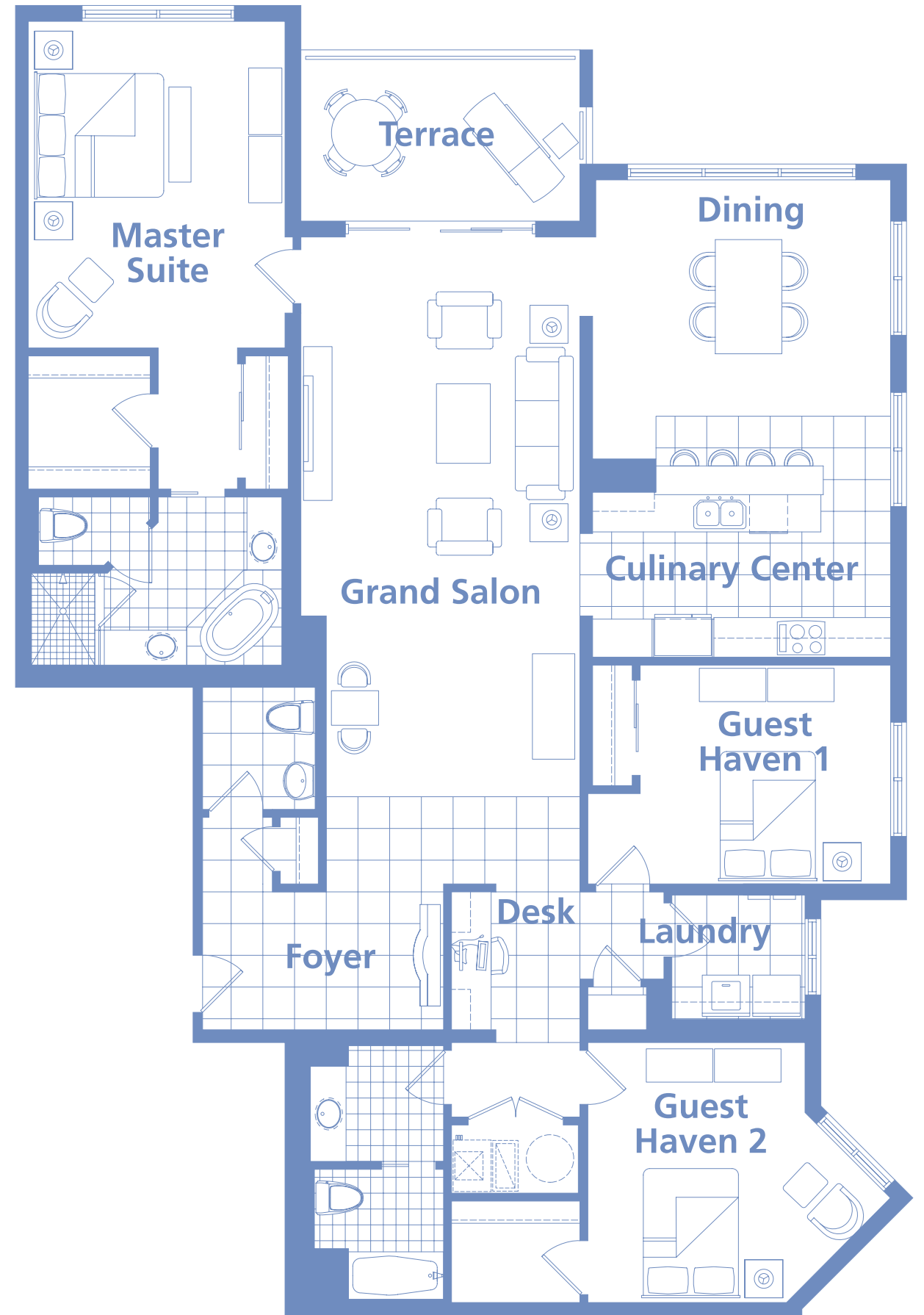
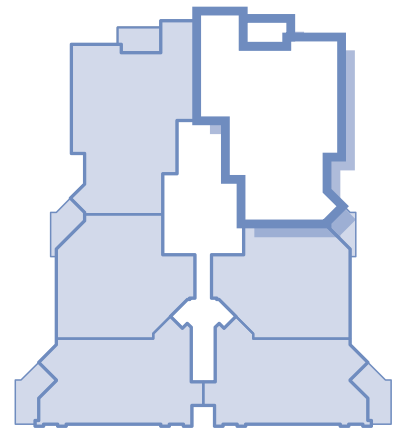
3 Bedroom / 2 1/2 Bath

Interior 2,425 Sq. Ft.

Terrace 136 Sq. Ft.

Total 2,558 Sq. Ft.

Tower Key Plan



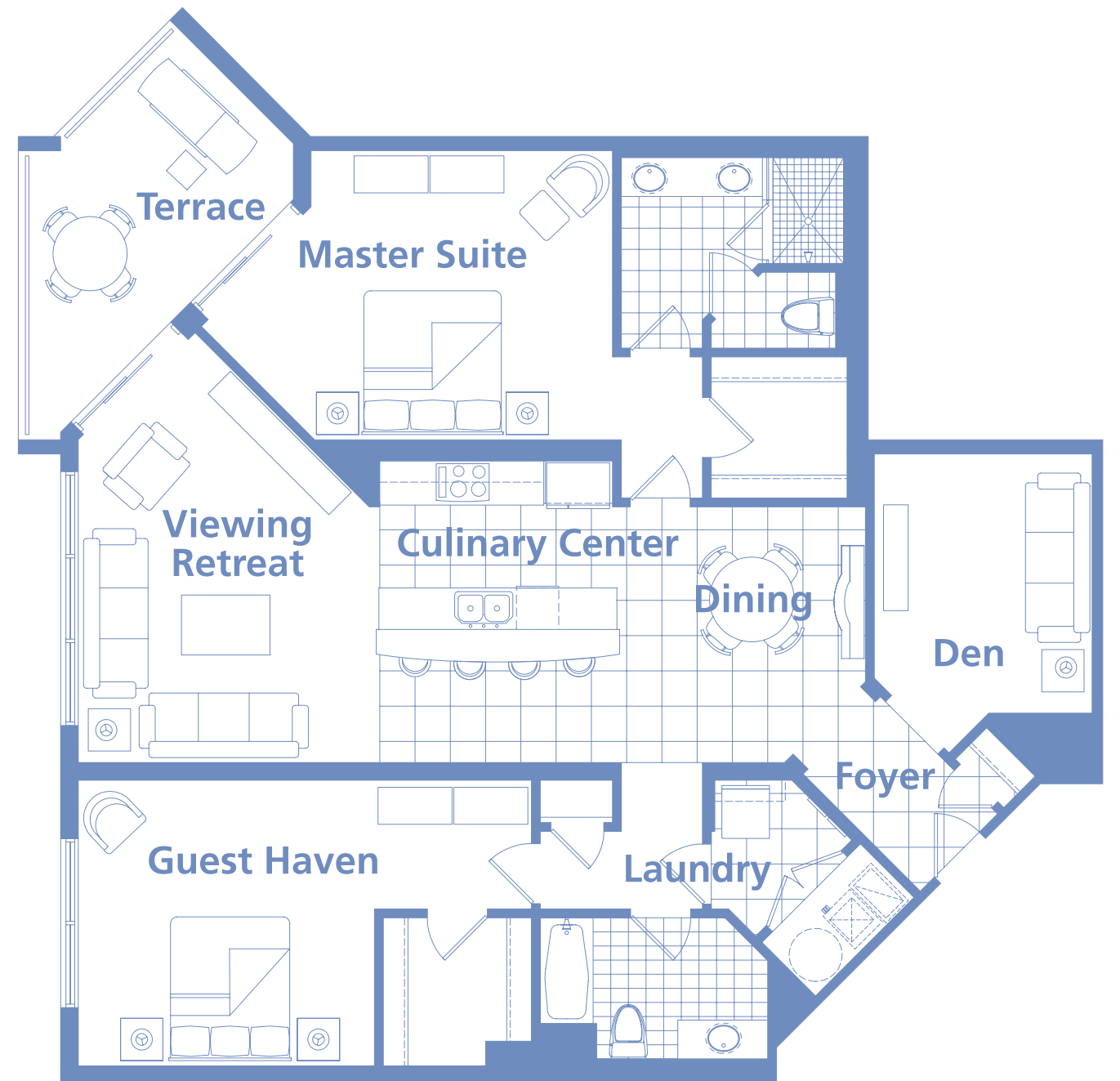
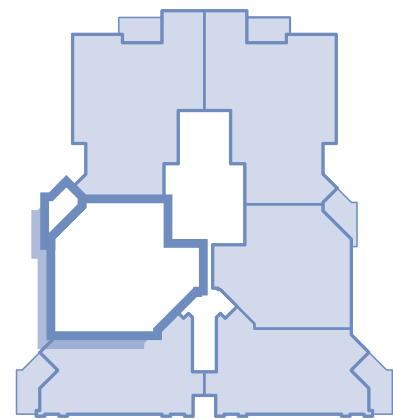
There are various methods for calculating the total square footage of a condominium unit, and depending on the method of calculation, the quoted square footage of a condominium unit may vary by more than a nominal amount. The total condominium unit square footages as shown in this brochure are based on the "Architectural Method" of measurement and the exterior perimeter measurements of the condominium unit, which include exterior walls, interior columns, fifty percent of demising walls. These square footage calculations are higher than the interior area space calculations for the condominium units. Please see the Declaration of Condominium for more information.

BAYSIDE SOUTH

2 Bedroom / 2 Bath / Den

Interior	1,765 Sq. Ft.
Terrace	153 Sq. Ft.
Total	1,919 Sq. Ft.

Tower Key Plan



There are various methods for calculating the total square footage of a condominium unit, and depending on the method of calculation, the quoted square footage of a condominium unit may vary by more than a nominal amount. The total condominium unit square footages as shown in this brochure are based on the "Architectural Method" of measurement and the exterior perimeter measurements of the condominium unit, which include exterior walls, interior columns, fifty percent of demising walls. These square footage calculations are higher than the interior area space calculations for the condominium units. Please see the Declaration of Condominium for more information.

BAYSIDE NORTH

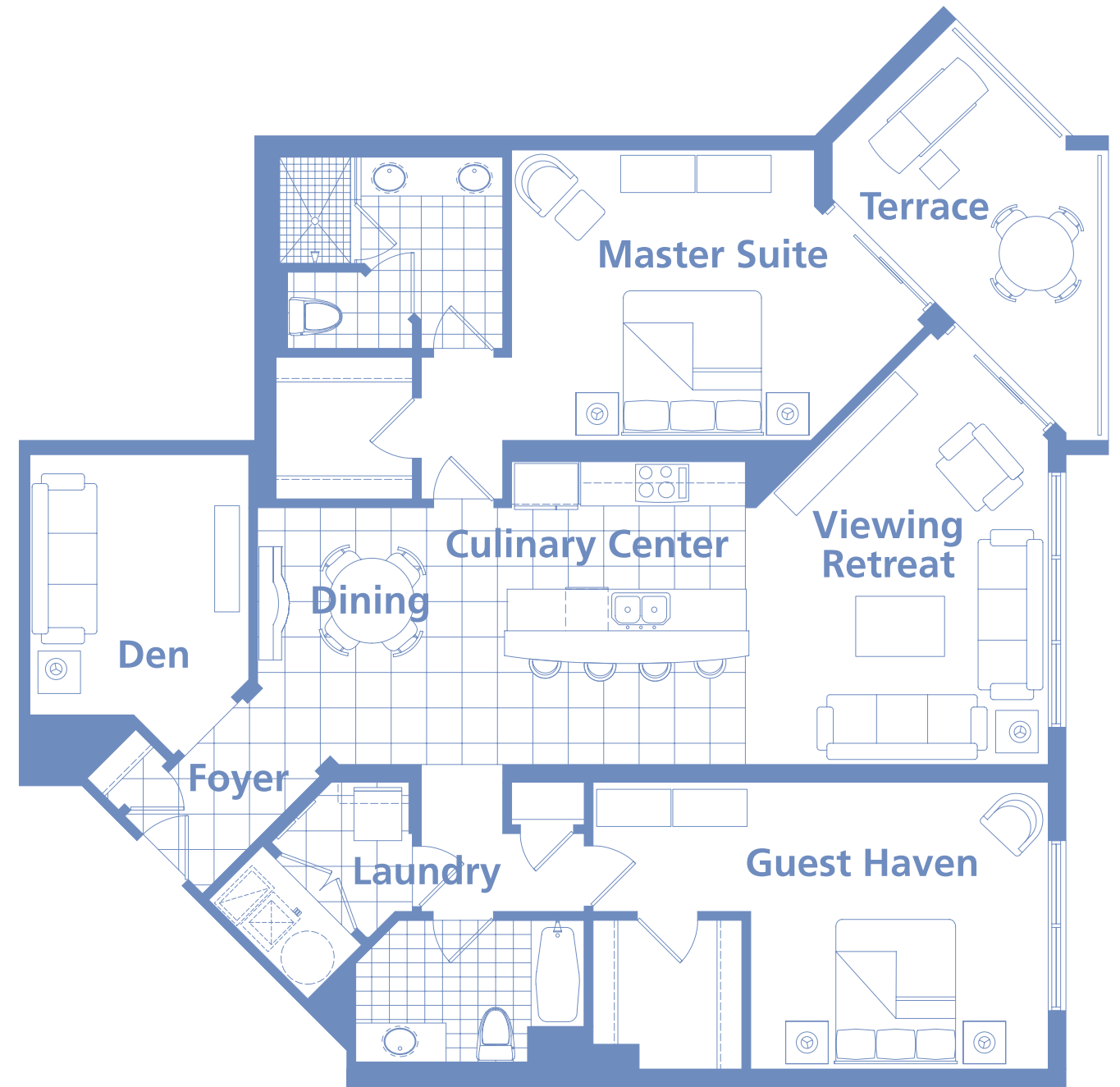
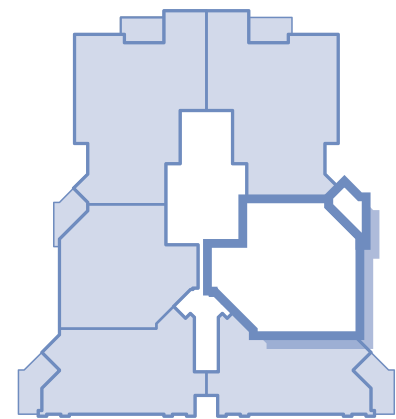
2 Bedroom / 2 Bath / Den

Interior 1,768 Sq. Ft.

Terrace 153 Sq. Ft.

Total 1,921 Sq. Ft.

Tower Key Plan



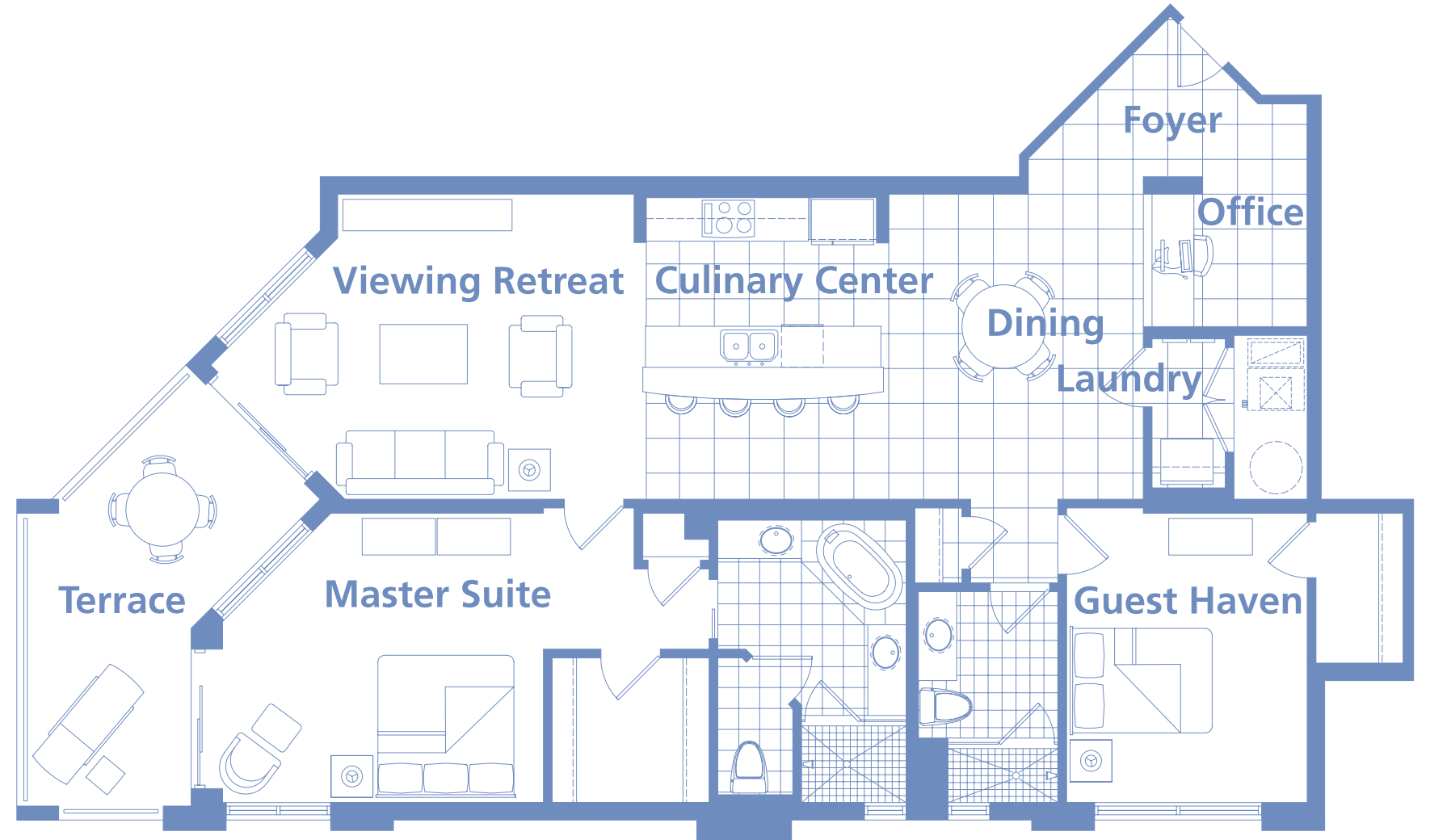
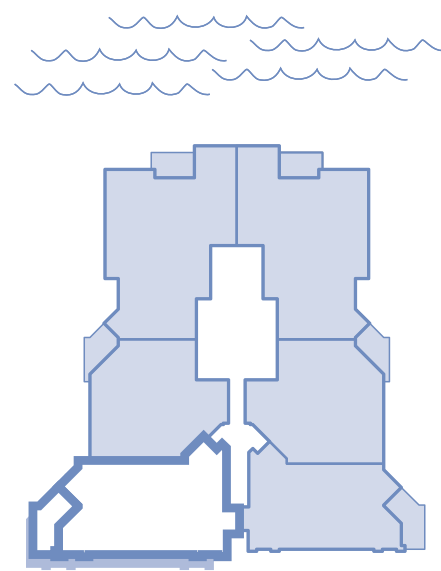
There are various methods for calculating the total square footage of a condominium unit, and depending on the method of calculation, the quoted square footage of a condominium unit may vary by more than a nominal amount. The total condominium unit square footages as shown in this brochure are based on the "Architectural Method" of measurement and the exterior perimeter measurements of the condominium unit, which include exterior walls, interior columns, fifty percent of demising walls. These square footage calculations are higher than the interior area space calculations for the condominium units. Please see the Declaration of Condominium for more information.

COACHMAN SOUTH

2 Bedroom / 2 Bath / Office

Interior	1,676 Sq. Ft.
Terrace	186 Sq. Ft.
Total	1,862 Sq. Ft.

Tower Key Plan



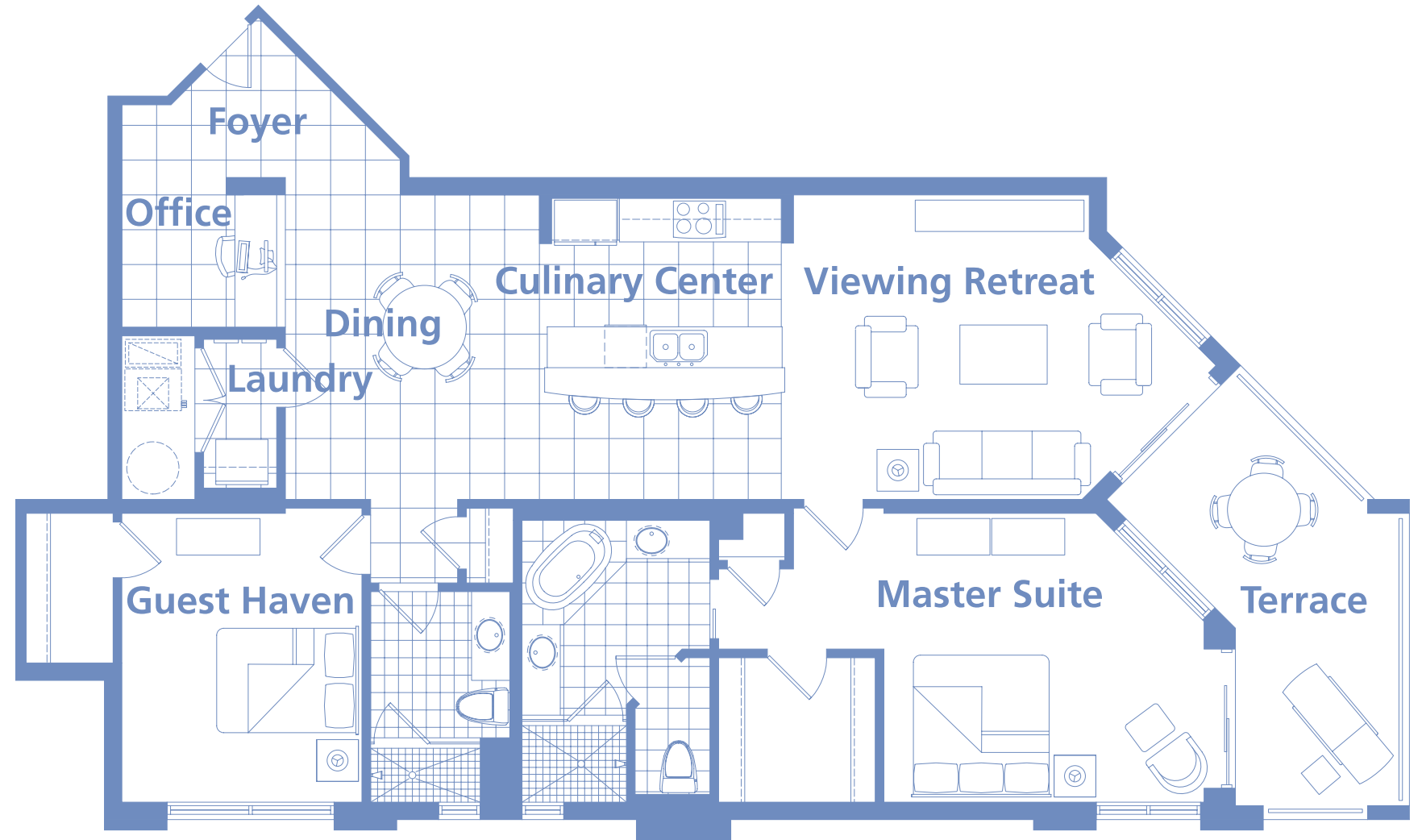
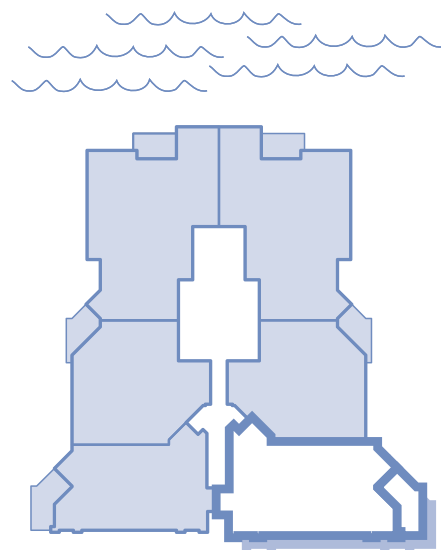
There are various methods for calculating the total square footage of a condominium unit, and depending on the method of calculation, the quoted square footage of a condominium unit may vary by more than a nominal amount. The total condominium unit square footages as shown in this brochure are based on the "Architectural Method" of measurement and the exterior perimeter measurements of the condominium unit, which include exterior walls, interior columns, fifty percent of demising walls. These square footage calculations are higher than the interior area space calculations for the condominium units. Please see the Declaration of Condominium for more information.

COACHMAN NORTH

2 Bedroom / 2 Bath / Office

Interior	1,676 Sq. Ft.
Terrace	186 Sq. Ft.
Total	1,862 Sq. Ft.

Tower Key Plan



There are various methods for calculating the total square footage of a condominium unit, and depending on the method of calculation, the quoted square footage of a condominium unit may vary by more than a nominal amount. The total condominium unit square footages as shown in this brochure are based on the "Architectural Method" of measurement and the exterior perimeter measurements of the condominium unit, which include exterior walls, interior columns, fifty percent of demising walls. These square footage calculations are higher than the interior area space calculations for the condominium units. Please see the Declaration of Condominium for more information.